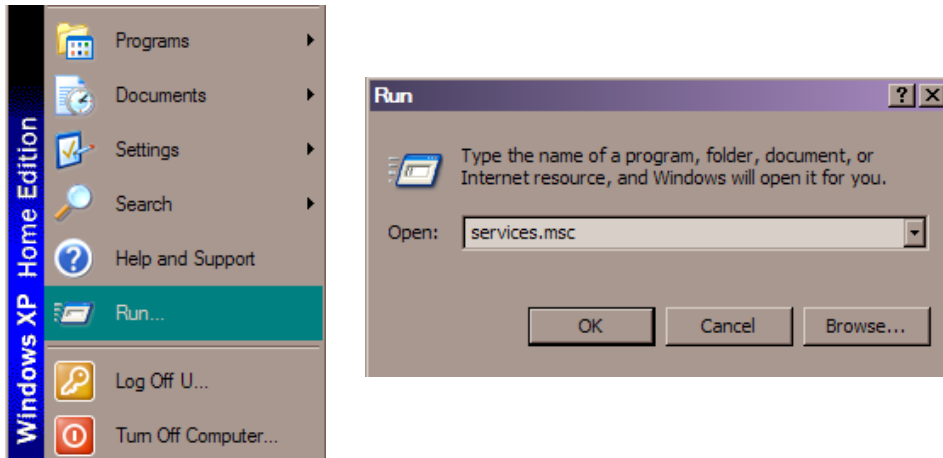


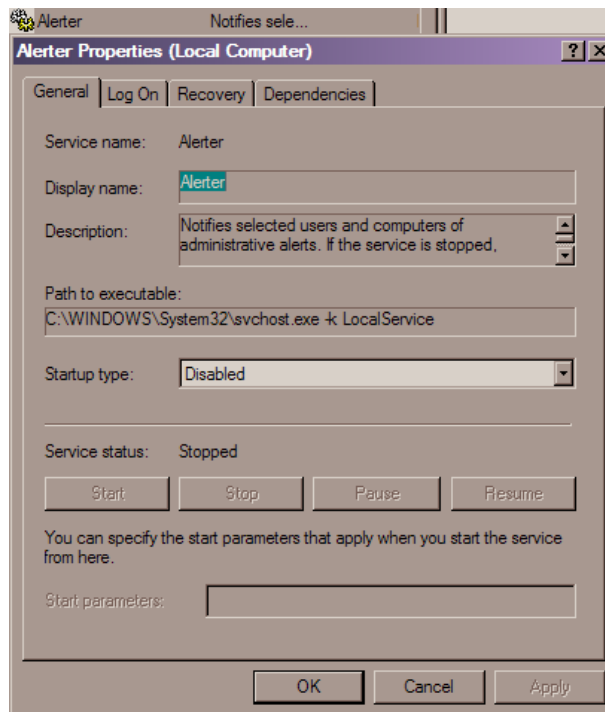
Service Configuration Windows XP SP2

Condoman@snet.net

1. The services in the table below are all that we are interested in. You may have additional services, leave them as they are. By setting these as the table is you save memory and disable annoying features of Windows.
2. To change service properties use Start / Run / services.msc.

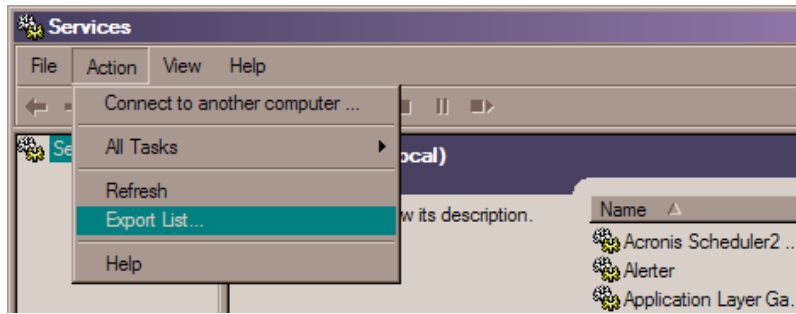


3. Double-click on the service you want to modify. This pops up the properties dialog.



4. If the status in the table below is blank then the service is stopped. Click the stop button to stop the service (shown grayed out here).
5. Select the startup type to be the same as in the table below.
6. If the service failed to stop in step #4 and you have selected disabled, on the next re-boot the service will stop.
7. Click OK to move on to the next service.

8. Hint: You can save a list of the services before you change them by choosing Action / Export List. The file created is tab delimited and can be loaded into Excel for reading it.



Service	Status	Type
Alerter		Disabled
Application Layer Gateway Service		Manual
Application Management		Manual
Automatic Updates		Disabled
Background Intelligent Transfer Service		Manual
ClipBook		Disabled
COM+ Event System		Manual
COM+ System Application		Manual
Computer Browser		Disabled
Cryptographic Services		Manual
DCOM Server Process Launcher	Started	Automatic
DHCP Client	Started	Automatic
Distributed Link Tracking Client		Disabled
Distributed Transaction Coordinator		Disabled
DNS Client		Disabled
Error Reporting Service		Disabled
Event Log	Started	Automatic
Fast User Switching Compatibility		Disabled
Fax		Automatic
Help and Support		Manual
HTTP SSL		Manual
Human Interface Device Access		Disabled
IMAPI CD-Burning COM Service		Manual
Indexing Service		Disabled
IPSEC Services		Disabled
Logical Disk Manager		Manual
Logical Disk Manager Administrative Service		Manual
Messenger		Disabled
MS Software Shadow Copy Provider		Manual
Net Logon		Disabled
NetMeeting Remote Desktop Sharing		Manual
Network Connections		Manual
Network DDE		Disabled
Network DDE DSDM		Disabled
Network Location Awareness (NLA)		Manual

Service	Status	Type
Network Provisioning Service		Manual
NT LM Security Support Provider		Manual
Office Source Engine		Manual
Performance Logs and Alerts		Manual
Plug and Play	Started	Automatic
Portable Media Serial Number Service		Disabled
Print Spooler	Started	Automatic
Protected Storage	Started	Automatic
QoS RSVP		Manual
Remote Access Auto Connection Manager		Manual
Remote Access Connection Manager		Manual
Remote Desktop Help Session Manager		Manual
Remote Procedure Call (RPC)	Started	Automatic
Remote Procedure Call (RPC) Locator		Manual
Removable Storage		Manual
Routing and Remote Access		Disabled
Secondary Logon		Disabled
Security Accounts Manager		Disabled
Security Center		Disabled
Server	Started	Automatic
Shell Hardware Detection	Started	Automatic
Smart Card		Manual
SSDP Discovery Service		Manual
System Event Notification		Automatic
System Restore Service		Disabled
Task Scheduler	Started	Automatic
TCP/IP NetBIOS Helper		Disabled
Telephony		Manual
Terminal Services	Started	Manual
Themes		Disabled
Uninterruptible Power Supply		Manual
Universal Plug and Play Device Host		Manual
Volume Shadow Copy		Manual
WebClient		Disabled
Windows Audio	Started	Automatic
Windows Firewall/Internet Connection Sharing (ICS)		Manual
Windows Image Acquisition (WIA)	Started	Automatic
Windows Installer		Manual
Windows Management Instrumentation	Started	Automatic
Windows Time	Started	Automatic
Wireless Zero Configuration		Disabled
WMI Performance Adapter		Manual
Workstation	Started	Automatic